

MUNICIPIO DE COLÔNIA DO PIAUÍ
PROJETO LUMINOTECNICO

Via Local – Via Tipo V5

Luminária: 21 W
Altura: 7 m
Distância entre Postes: 30 m
Via: 8 m
Calçada: 1,5 m
Braço: 2 m

Rua/Av.: Via Local Classificação de
Via/Lux: V5 / 5 lx Classificação de
Calçada/Lux: P4 / 3 lx

Operator
Telephone
Fax
e-Mail

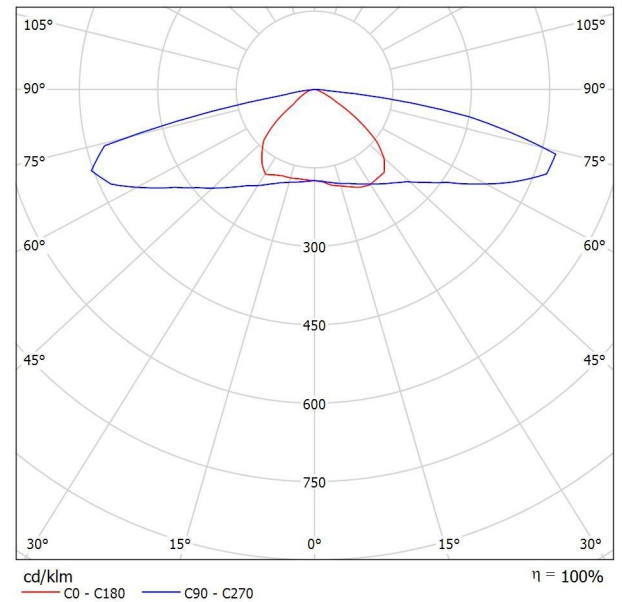
Table of contents

Via Local	
Project Cover	1
Table of contents	2
Luminaria 21 W	
Luminaire Data Sheet	3
Projeto Luminotécnico	
Planning data	4
Photometric Results	5
3D Rendering	7
False Colour Rendering	8
Valuation Fields	
Via	
Value Chart (E)	9
Observer	
Observador 1	
Isolines (L)	10
Observador 2	
Isolines (L)	11
Calçada Oposta	
Value Chart (E)	12
Calçada	
Value Chart (E)	13

Operator
Telephone
Fax
e-Mail

Luminaria21W / Luminaire DataSheet

Luminous emittance 1:



Luminaire classification according to CIE: 100
CIE flux code: 32 66 93 100 100

Due to missing symmetry properties, no UGR table can be displayed for this luminaire.

Operator
Telephone
Fax
e-Mail

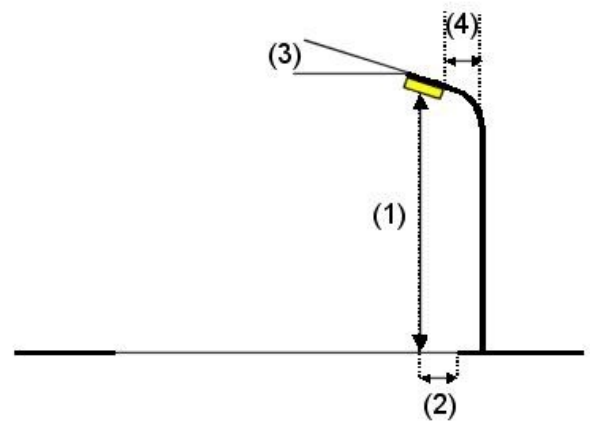
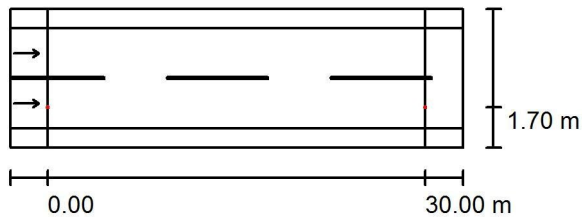
ProjetoLuminotécnico/Planningdata

Street Profile

Calçada Oposta	(Width: 1.500 m)
Via	(Width: 8.000 m, Number of lanes: 2, tarmac: R3, q0: 0.070)
Calçada	(Width: 1.500 m)

Maintenance factor: 1.00

Luminaire Arrangements



Luminaire:	Luminária 21 W
Luminous flux (Luminaire):	3570 lm
Luminous flux (Lamps):	3570 lm
Luminaire Wattage:	21.0 W
Arrangement:	Single row, bottom
Pole Distance:	30.000 m
Mounting Height (1):	7.000 m
Height:	6.900 m
Overhang (2):	1.700 m
Boom Angle (3):	0.0°
Boom Length (4):	2.000 m

Maximum luminous intensities

at 70°:	743 cd/klm
at 80°:	864 cd/klm
at 90°:	18 cd/klm

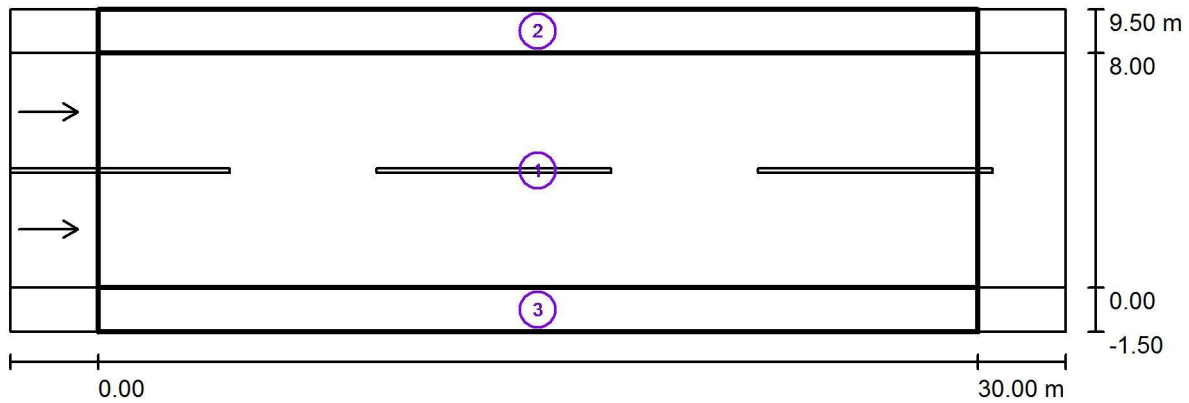
Any direction forming the specified angle from the downward vertical, with the luminaire installed for use.

No luminous intensities above 95°.

Arrangement complies with glare index class D.4.

Operator
Telephone
Fax
e-Mail

ProjetoLuminotécnico/PhotometricResults



Maintenance factor: 1.00

Scale 1:258

Calculation Field List

- 1 Via
 Length: 30.000 m, Width: 8.000 m
 Grid: 10 x 6 Points
 Accompanying Street Elements: Via.
 tarmac: R3, q0: 0.070
 Selected Lighting Class: ME4a

(Not all lighting performance requirements are met.)

	L_{av} [cd/m ²]	U0	UI	TI [%]	SR
Calculated values:	0.51	0.49	0.75	14	0.64
Required values according to class:	≥ 0.50	≥ 0.40	≥ 0.60	≤ 15	≥ 0.00
Fulfilled/Not fulfilled:	✓	✓	✓	✓	✓

Operator
Telephone
Fax
e-Mail

ProjetoLuminotécnico/PhotometricResults

Calculation Field List

- 2 Calçada Oposta
Length: 30.000 m, Width: 1.500 m
Grid: 10 x 3 Points
Accompanying Street Elements: Calçada Oposta.
Selected Lighting Class: CE5 (All lighting performance requirements are met.)

	E_{av} [lx]	U0
Calculated values:	3.74	0.76
Required values according to class:	≥ 3.00	≥ 0.20
Fulfilled/Not fulfilled:	✓	✓

- 3 Calçada
Length: 30.000 m, Width: 1.500 m
Grid: 10 x 3 Points
Accompanying Street Elements: Calçada.
Selected Lighting Class: CE5 (All lighting performance requirements are met.)

	E_{av} [lx]	U0
Calculated values:	4.84	0.43
Required values according to class:	≥ 3.00	≥ 0.20
Fulfilled/Not fulfilled:	✓	✓

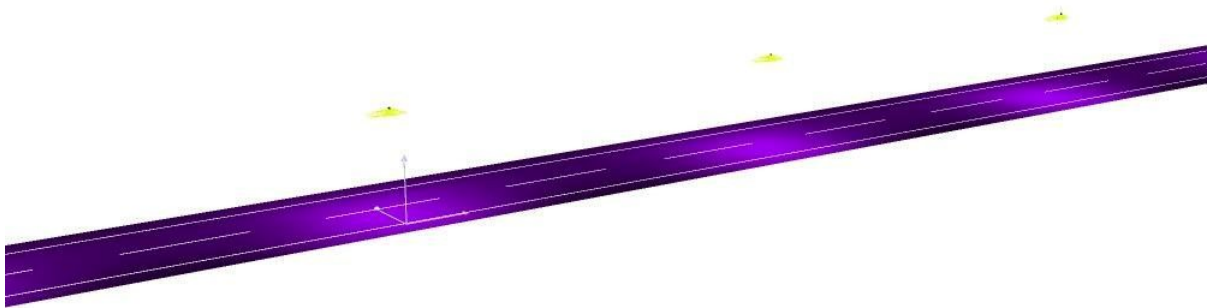
Operator
Telephone
Fax
e-Mail

ProjetoLuminotécnico/3D Rendering



Operator
Telephone
Fax
e-Mail

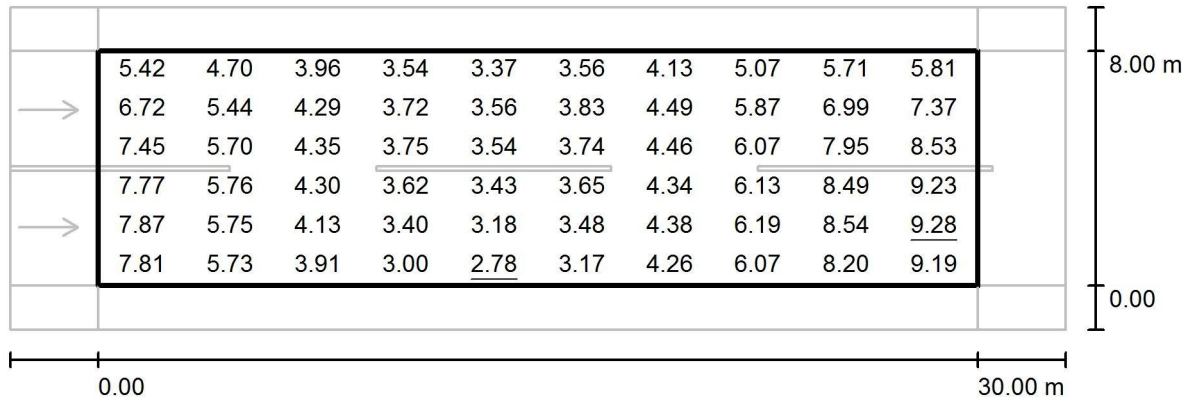
ProjetoLuminotécnico/FalseColourRendering



lx

Operator
Telephone
Fax
e-Mail

ProjetoLuminotécnico/Via/ValueChart(E)



Values in Lux, Scale 1 : 258

Grid: 10 x 6 Points

E_{av} [lx]
5.34

E_{min} [lx]
2.78

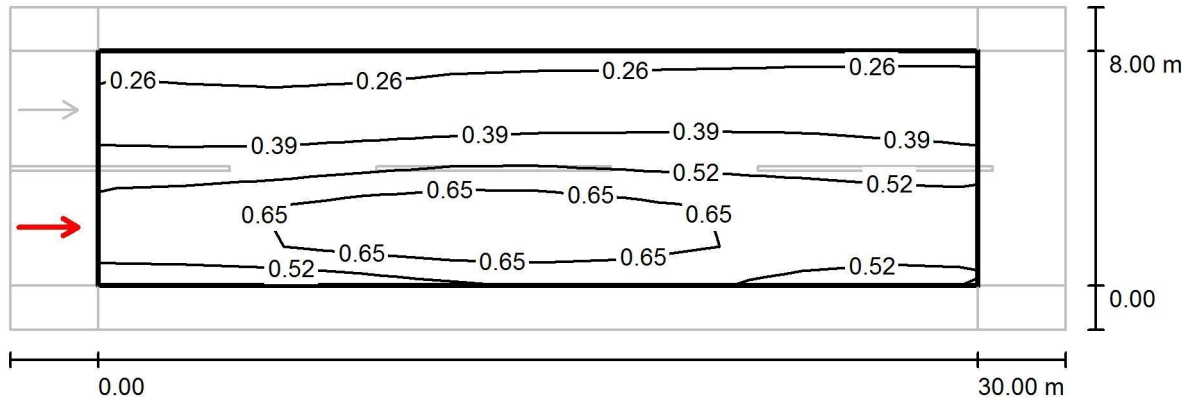
E_{max} [lx]
9.28

u0
0.521

E_{min} / E_{max}
0.300

Operator
Telephone
Fax
e-Mail

ProjetoLuminotécnico/Via/Observador1/Isolines(L)



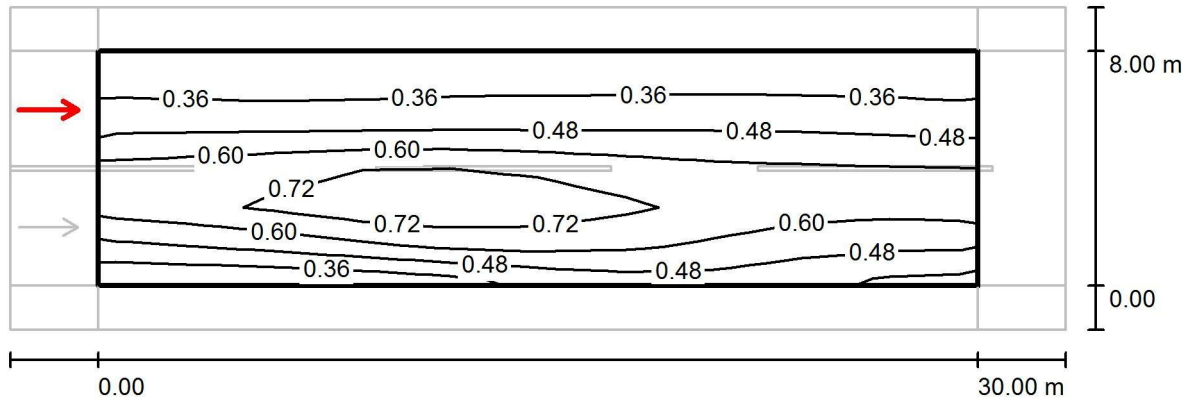
Values in Candela/m², Scale 1 : 258

Grid: 10 x 6 Points
Observer Position: (-60.000 m, 2.000 m, 1.500 m)
tarmac: R3, q0: 0.070

	L_{av} [cd/m ²]	U0	UI	TI [%]
Calculated values:	0.51	0.49	0.75	14
Required values according to class ME4a:	≥ 0.50	≥ 0.40	≥ 0.60	≤ 15
Fulfilled/Not fulfilled:	✓	✓	✓	✓

Operator
Telephone
Fax
e-Mail

ProjetoLuminotécnico/Via/Observador2/Isolines(L)



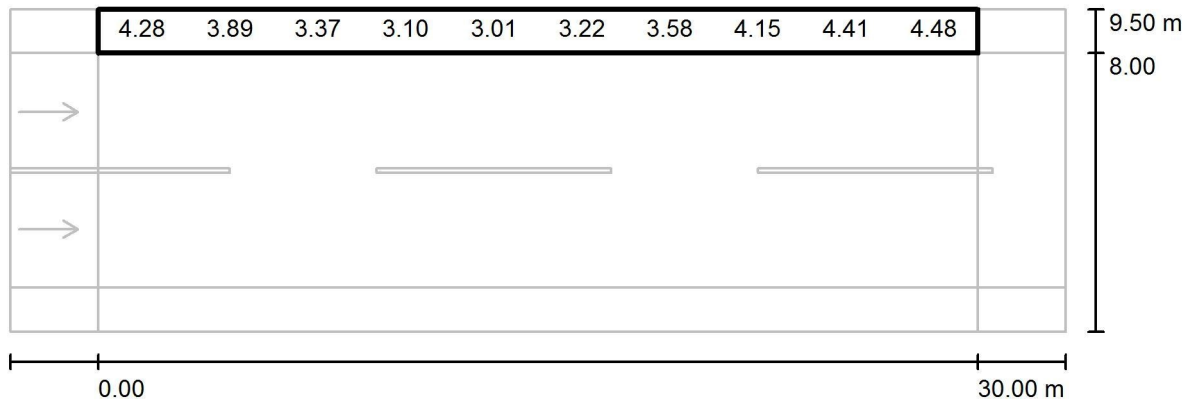
Values in Candela/m², Scale 1 : 258

Grid: 10 x 6 Points
Observer Position: (-60.000 m, 6.000 m, 1.500 m)
tarmac: R3, q0: 0.070

	L_{av} [cd/m ²]	U0	UI	TI [%]
Calculated values:	0.52	0.51	0.91	13
Required values according to class ME4a:	≥ 0.50	≥ 0.40	≥ 0.60	≤ 15
Fulfilled/Not fulfilled:	✓	✓	✓	✓

Operator
Telephone
Fax
e-Mail

ProjetoLuminotécnico/CalçadaOposta/ValueChart(E)



Values in Lux, Scale 1 : 258

Not all calculated values could be displayed.

Grid: 10 x 3 Points

E_{av} [lx]
3.74

E_{min} [lx]
2.84

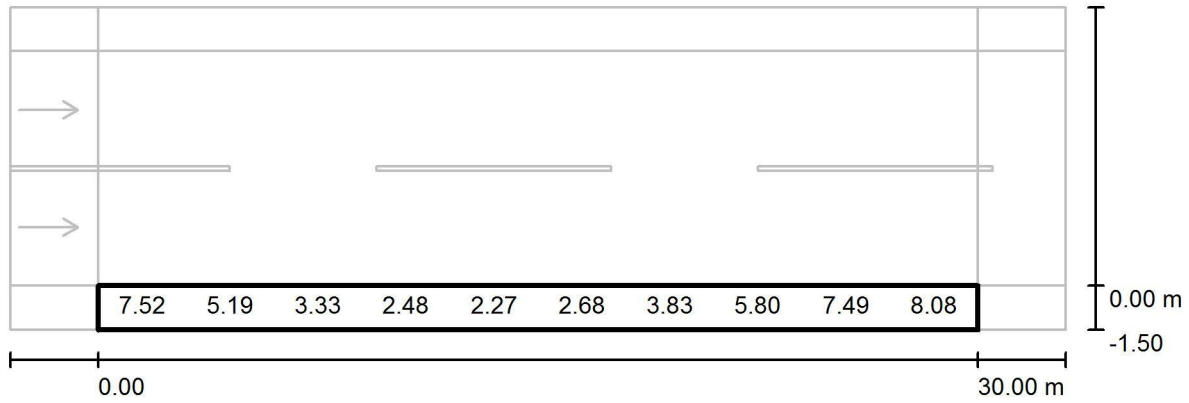
E_{max} [lx]
4.96

u_0
0.760

E_{min} / E_{max}
0.574

Operator
Telephone
Fax
e-Mail

ProjetoLuminotécnico/Calçada/ValueChart(E)



Values in Lux, Scale 1 : 258

Not all calculated values could be displayed.

Grid: 10 x 3 Points

E_{av} [lx]	E_{min} [lx]	E_{max} [lx]	u0	E_{min} / E_{max}
5,04	2.10	8.44	0.433	0.248